



PERIÓDICA



A

Alda Ernestina dos Santos



APRESENTAÇÃO

Esta Tabela Periódica Inclusiva foi elaborada com o intuito de servir como material de apoio a professores(as) das disciplinas de Ciências e/ou Química que tenham alunos com deficiência auditiva, ou que simplesmente desejam conhecer a representação dos elementos químicos na Língua Brasileira de Sinais (LIBRAS) e utilizar tal linguagem para se referir aos elementos químicos.

Espero que o material lhe seja útil!!!

Alda Ernestina



SOBRE A AUTORA

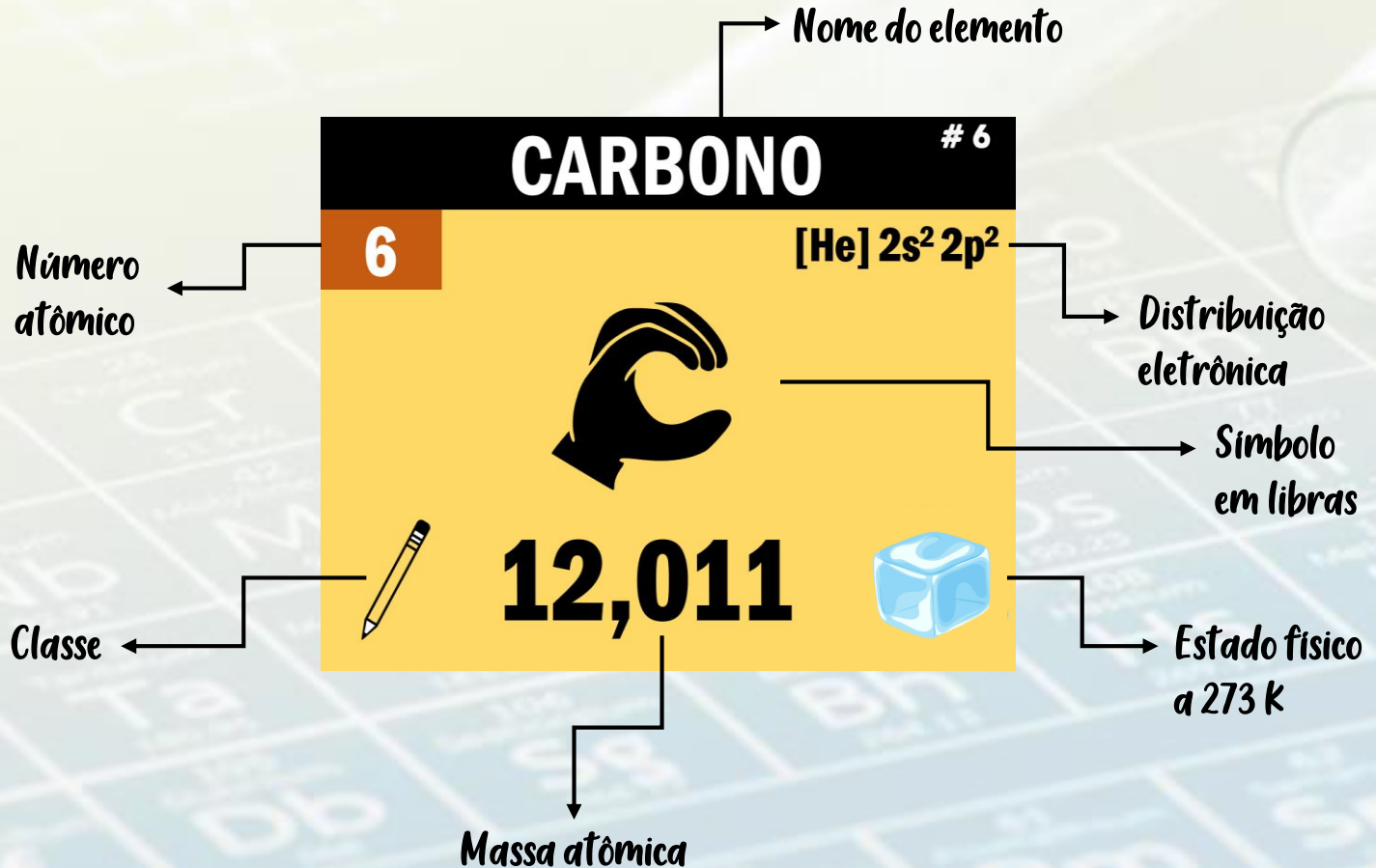


Alda Ernestina dos Santos

Doutora e Mestre em Química pela UFRJ, possui licenciatura plena em Química.

É professora do Núcleo de Química do IFMG *campus* Bambuí, onde está atualmente como membro do Núcleo de Atendimento às Pessoas com Necessidades Educacionais Específicas (NAPNEE) da instituição.

REPRESENTAÇÃO



LEGENDA



METAL



GÁS NOBRE



AMETAL



SÓLIDO



SEMI-METAL



LÍQUIDO



**PROPIEDADES
DESCONHECIDAS**



GASOSO

COMO UTILIZAR

Para ter acesso às informações de cada elemento químico, na Tabela Periódica da próxima página clique sobre o elemento desejado e você será automaticamente direcionado para a página contendo as informações do referido elemento.

Para retornar à Tabela Periódica basta clicar no botão localizado no canto superior esquerdo da página.



Atenção!!!!

É possível que em alguns leitores de PDF os links não funcionem, especialmente no uso em celulares. Desta forma, recomendamos que o arquivo seja aberto no computador.

Tabela periódica



3	— número atômico
Li	— símbolo químico
lítio	— nome
6,94	— peso atômico (massa atômica relativa)

1 H hidrogênio 1,008																	18 He hélio 4,0026
3 Li lítio 6,94	4 Be berílio 9,0122											13 B boro 10,81	14 C carbono 12,011	15 N nitrogênio 14,007	16 O oxigênio 15,999	17 F flúor 18,998	10 Ne neônio 20,180
11 Na sódio 22,990	12 Mg magnésio 24,305											13 Al alumínio 26,982	14 Si silício 28,085	15 P fósforo 30,974	16 S enxofre 32,06	17 Cl cloro 35,45	18 Ar argônio 39,95
19 K potássio 39,098	20 Ca cálcio 40,078(4)	21 Sc escândio 44,956	22 Ti títânio 47,867	23 V vanádio 50,942	24 Cr cromio 51,996	25 Mn manganês 54,938	26 Fe ferro 55,845(2)	27 Co cobalto 58,933	28 Ni níquel 58,693	29 Cu cobre 63,546(3)	30 Zn zinc 65,38(2)	31 Ga gálio 69,723	32 Ge germânio 72,630(6)	33 As arsênio 74,922	34 Se selênio 78,971(8)	35 Br bromo 79,904	36 Kr criptônio 83,798(2)
37 Rb rubídio 85,468	38 Sr estrôncio 87,62	39 Y ítrio 88,906	40 Zr zircônio 91,224(2)	41 Nb nióbio 92,906	42 Mo molibdênio 95,95	43 Tc tecnécio	44 Ru rutênio 101,07(2)	45 Rh ródio 102,91	46 Pd paládio 106,42	47 Ag prata 107,87	48 Cd cádmio 112,41	49 In índio 114,82	50 Sn estanho 118,71	51 Sb antimônio 121,76	52 Te telúrio 127,60(3)	53 I iodo 126,90	54 Xe xenônio 131,29
55 Cs césio 132,91	56 Ba bário 137,33	57 a 71															
72 Hf háfnio 178,486(6)	73 Ta tântalo 180,95	74 W tungstênio 183,84	75 Re rênio 186,21	76 Os ósio 190,23(3)	77 Ir irídio 192,22	78 Pt platina 195,08	79 Au ouro 196,97	80 Hg mercúrio 200,59	81 Tl tálio 204,38	82 Pb chumbo 207,2	83 Bi bismuto 208,98	84 Po polônio	85 At astato	86 Rn radônio	89 a 103		
104 Rf rutherfordório	105 Db dúbnio	106 Sg seabórgio	107 Bh bóhrio	108 Hs hássio	109 Mt meitnério	110 Ds darmstádio	111 Rg roentgênio	112 Cn copernício	113 Nh nihônio	114 Fl fleróvio	115 Mc moscóvio	116 Lv livermório	117 Ts tennesso	118 Og oganessônio			
57 La lantânio 138,91	58 Ce cério 140,12	59 Pr praseodímio 140,91	60 Nd neodímio 144,24	61 Pm promécio	62 Sm samário 150,36(2)	63 Eu europio 151,96	64 Gd gadolínio 157,25(3)	65 Tb térbio 158,93	66 Dy disprósio 162,50	67 Ho hólmio 164,93	68 Er érbio 167,26	69 Tm itúlio 168,93	70 Yb itérbio 173,05	71 Lu lutécio 174,97			
89 Ac actínio	90 Th tório 232,04	91 Pa protactínio 231,04	92 U urânio 238,03	93 Np neptúnio	94 Pu plutônio	95 Am amerício	96 Cm cúrio	97 Bk berquílio	98 Cf califórnio	99 Es einstênio	100 Fm férmio	101 Md mendelévio	102 No nobélio	103 Lr laurêncio			

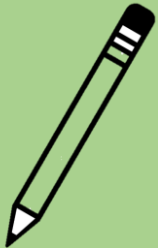


HIDROGÊNIO

1

1

$1s^1$



1,008





HÉLIO

2

2

$1s^2$



4,003



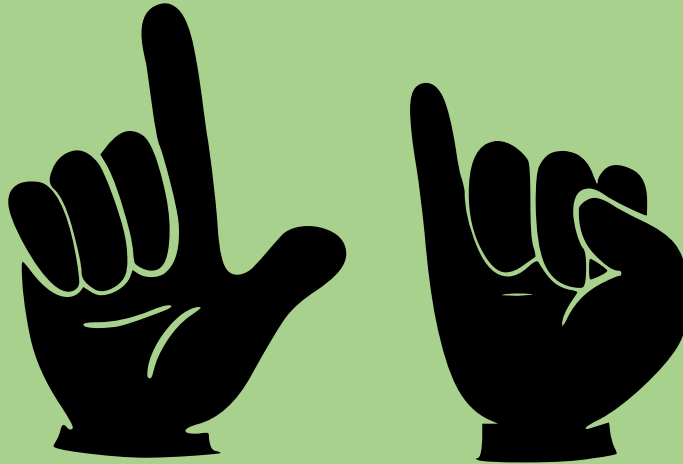


LÍTHIO

3

3

[He] 2s¹



6,94





BERÍLIO

4

4

[He] 2s²



9,012





BORO

5

5

$[\text{He}] 2s^2 2p^1$



10,81





CARBONO

6

6

[He] 2s² 2p²



12,011



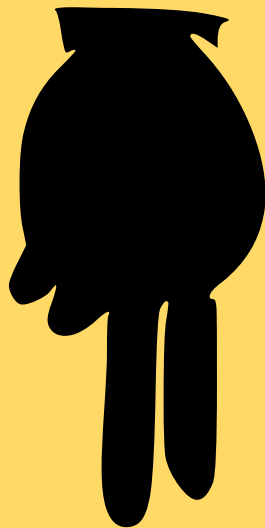


NITROGÊNIO

7

7

[He] 2s² 2p³



14,007





OXIGÊNIO

8

8

[He] 2s² 2p⁴



15,999





FLÚOR

9

9



18,998





NEÔNIO

10

10



20,180





SÓDIO

11

11

[Ne] 3s¹



22,990





MAGNÉSIÓ

12

12

[Ne] 3s²



24,305





ALUMÍNIO

13

13

[Ne] 3s² 3p¹



26,982





SILÍCIO

14

14

[Ne] 3s² 3p²



28,085





FÓSFORO

15

15

[Ne] 3s² 3p³



30,974





ENXOFRE

16

16

[Ne] 3s² 3p⁴



32,06





CORO

17

17

$[\text{Ne}] 3s^2 3p^5$



35,45





ARGÔNIO

18

18

[Ne] 3s² 3p⁶



39,948





POTÁSSIO

19

19

[Ar] 4s¹



39,098





CÁLCIO

20

20

[Ar] 4s²



40,078





ESCÂNDIO

21

21

[Ar] 3d¹ 4s²



44,956



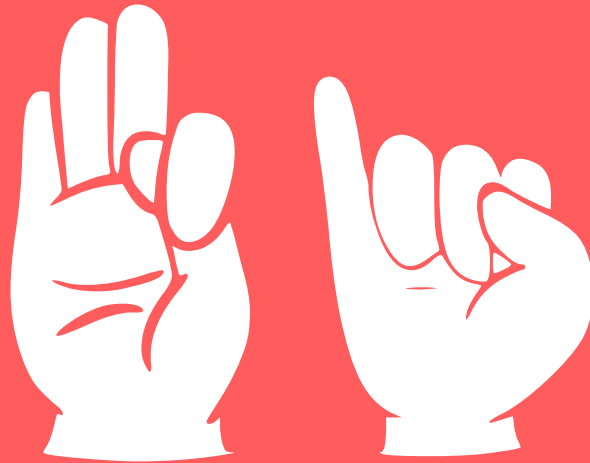


TITÂNIO

22

22

[Ar] 3d² 4s²



47,867





VANÁDIO

23

23

[Ar] 3d³ 4s²



50,942



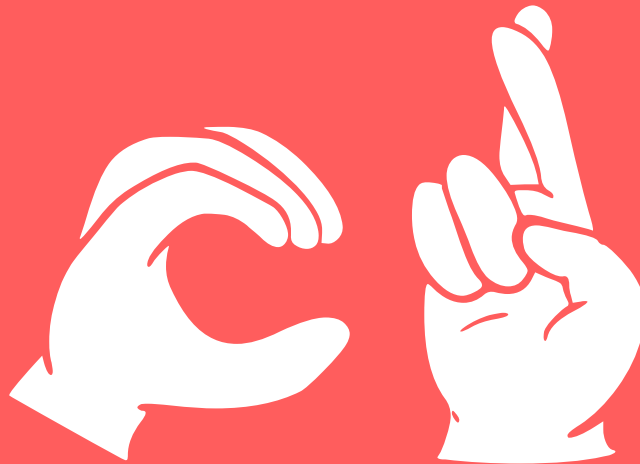


CROMO

24

24

[Ar] 3d⁵ 4s¹



51,996



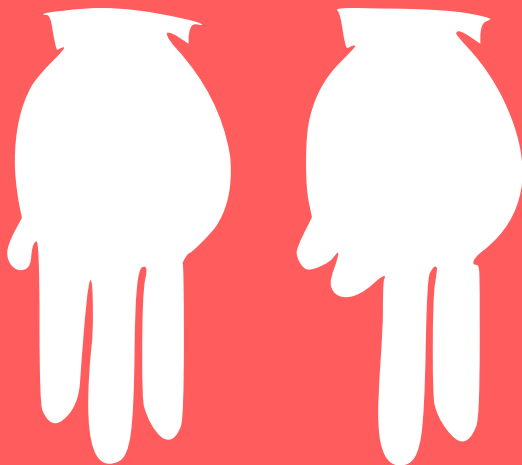


MANGANÊS

25

25

[Ar] 3d⁵ 4s²



54,938



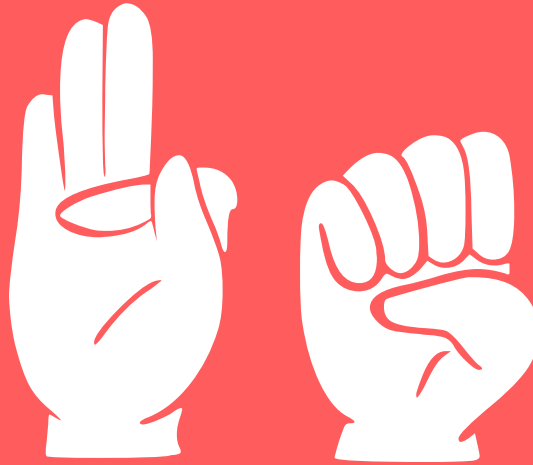


FERRO

26

26

[Ar] 3d⁶ 4s²



55,845





COBALTO

27

27

[Ar] 3d⁷ 4s²



58,933



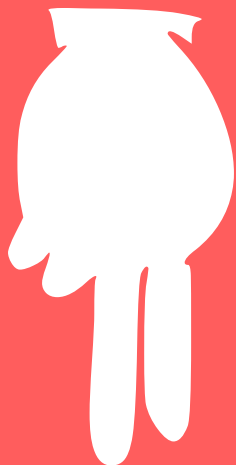


NÍQUEL

28

28

[Ar] 3d⁸ 4s²



58,693





COBRE

29

29

[Ar] 3d¹⁰ 4s¹



63,546



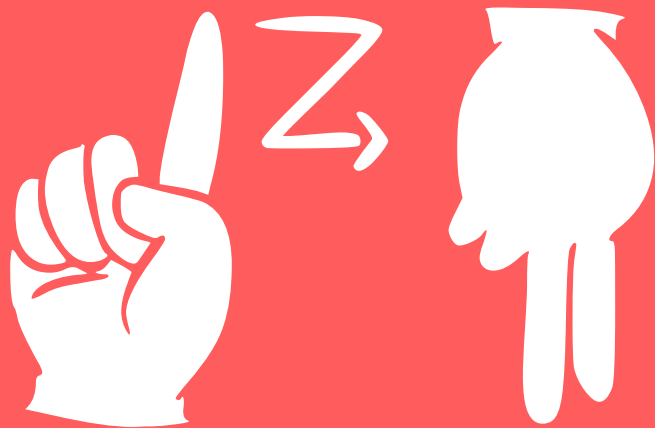


ZINCO

30

30

[Ar] 3d¹⁰ 4s²



65,38





GÁLIO

31

31

[Ar] 3d¹⁰
4s² 4p¹



69,723





GERMÂNIO

32

32

[Ar] 3d¹⁰
4s² 4p²



72,630





ARSÊNIO

33

33

[Ar] 3d¹⁰
4s² 4p³



74,922

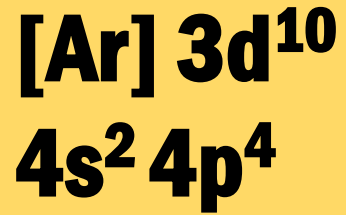




SELÊNIO

34

34



78,971

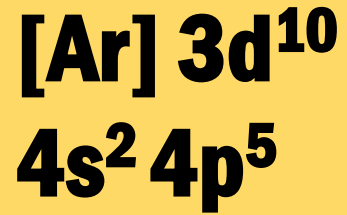




BROMO

35

35



79,904



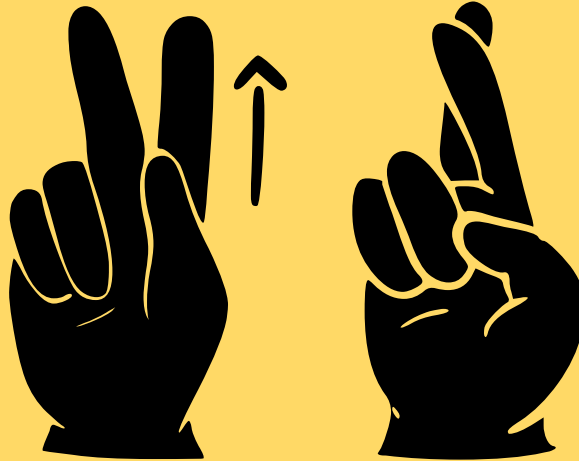


CRIP TÔNIO

36

36

[Ar] 3d¹⁰
4s² 4p⁶



83,798



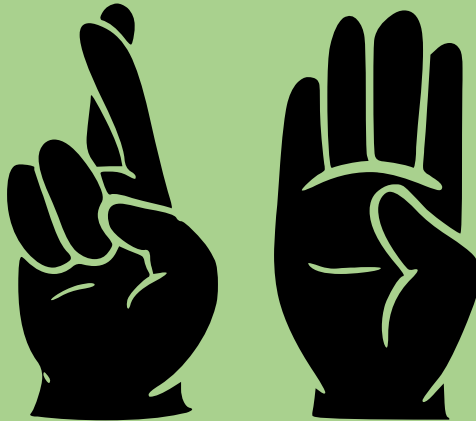


RUBÍDIO

37

37

[Kr] 5s¹



85,468





ESTRÔNCIO

38

38

[Kr] 5s²



85,468





ÍTRIO

39

39

[Kr] 4d¹ 5s²



88,906



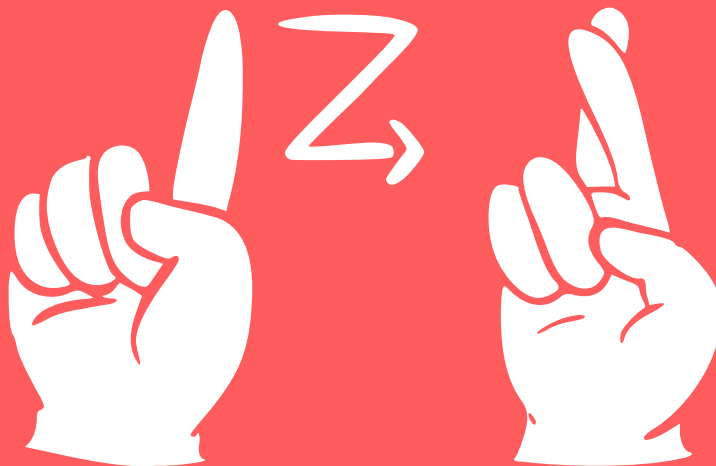


ZIRCÔNIO

40

40

[Kr] 4d² 5s²



91,224



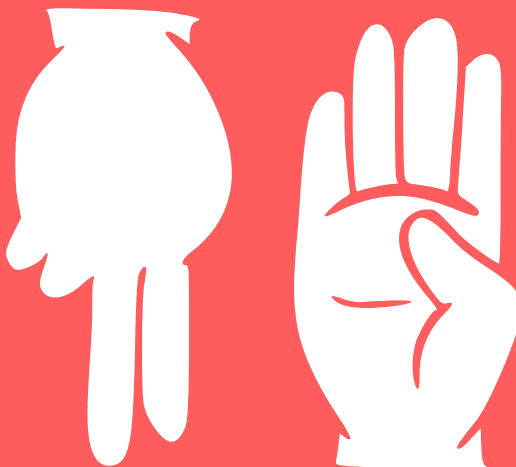


NIÓBIO

41

41

[Kr] 4d⁴ 5s¹



92,906



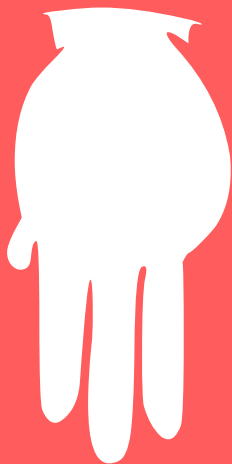


MOLIBDÊNIO

42

42

[Kr] 4d⁵ 5s¹



95,95





TECNÉCIO

43

43

$[\text{Kr}] 4d^5 5s^2$



[98]



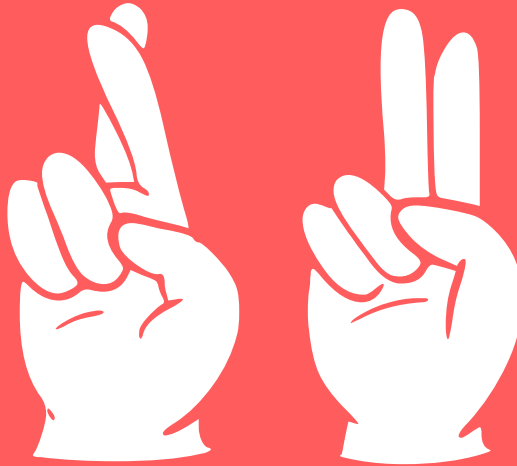


RUTÊNIO

44

44

[Kr] 4d⁷ 5s¹



101,07



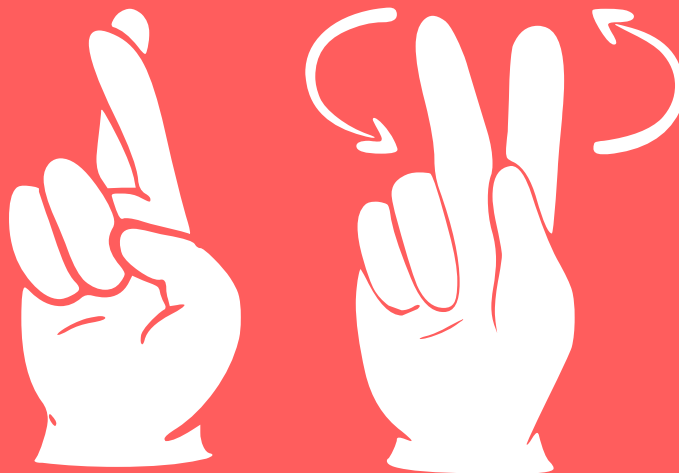


RÓDIO

45

45

[Kr] 4d⁸ 5s¹



102,906



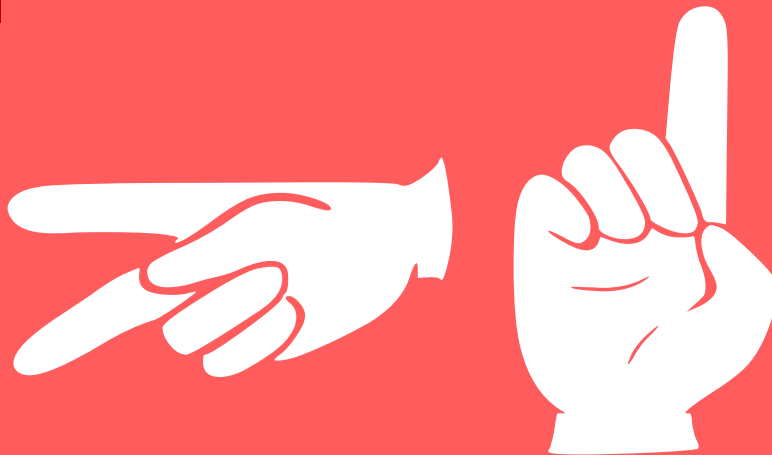


PALÁDIO

46

46

[Kr] 4d¹⁰



106,42





PRATA

47

47

[Kr] 4d¹⁰ 5s¹



107,868





CÁDMIO

48

48

[Kr] 4d¹⁰ 5s²



112,414



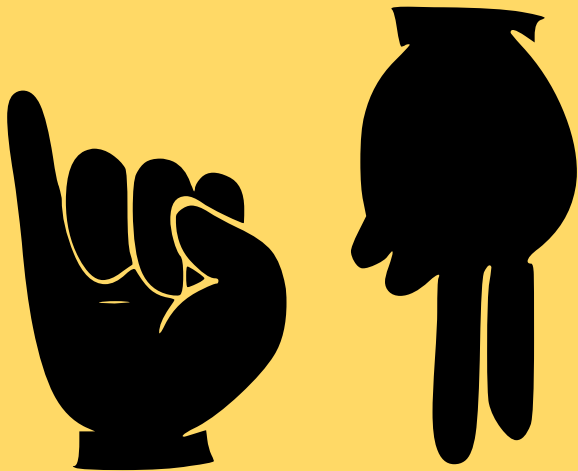


ÍNDIO

49

49

[Kr] 4d¹⁰
5s² 5p¹



114,818





ESTANHO

50

50

[Kr] 4d¹⁰
5s² 5p²



118,710





ANTIMÔNIO

51

51

[Kr] 4d¹⁰
5s² 5p³



121,760

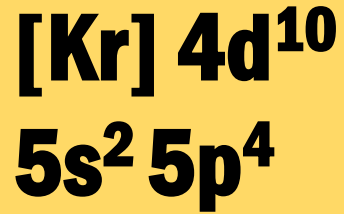




TELÚRIO

52

52



127,60





IODO

53

53

$[\text{Kr}] 4d^{10}$
 $5s^2 5p^5$



126,904





XENÔNIO

54

54

[Kr] 4d¹⁰
5s² 5p⁶



131,293





CÉSIÓ

55

55

[Xe] 6s¹



132,905





BÁRIO

56

56

[Xe] 6s²



137,327



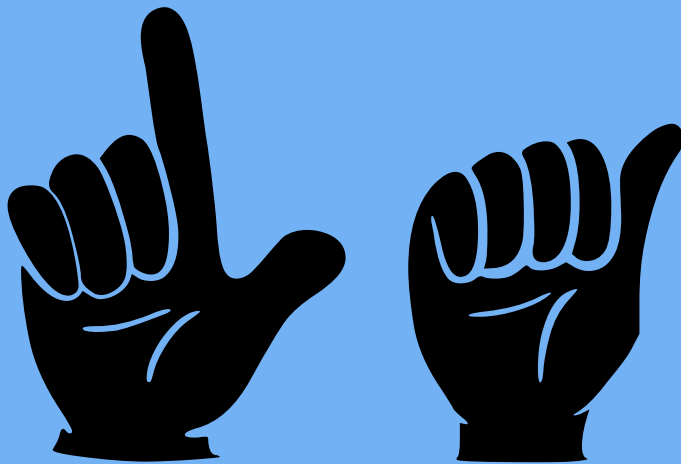


LANTÂNIO

57

57

[Xe] 5d¹ 6s²



138,905



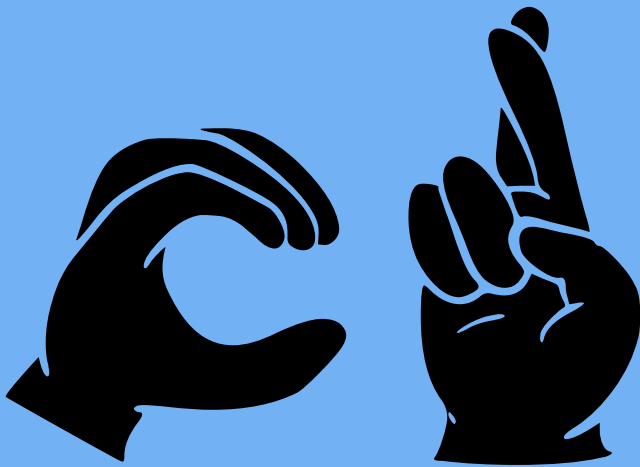


CÉRIO

58

58

$[\text{Xe}] 4f^1$
 $5d^1 6s^2$



140,116



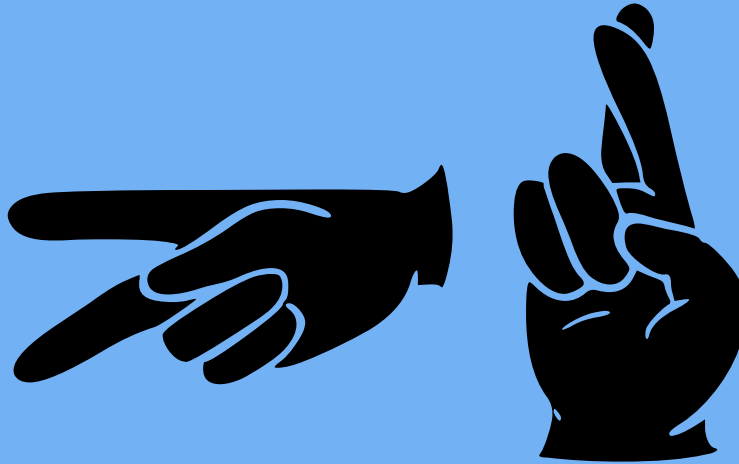


PRASEODÍMIO

59

59

[Xe] 4f³ 6s²



140,908



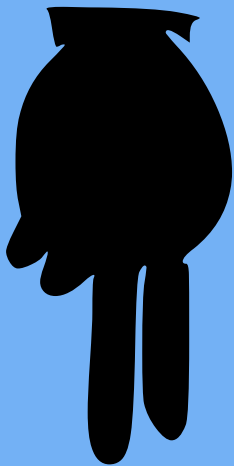


NEODÍMIO

60

60

$[\text{Xe}] 4f^4 6s^2$



144, 242



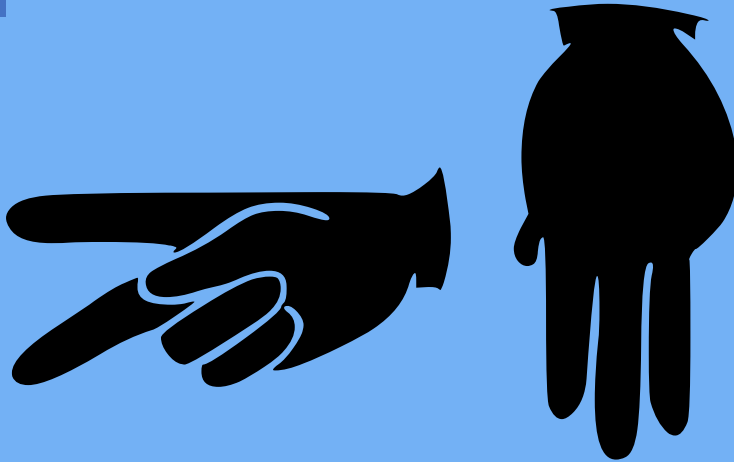


PROMÉCIO

61

61

[Xe] 4f⁵ 6s²



[145]



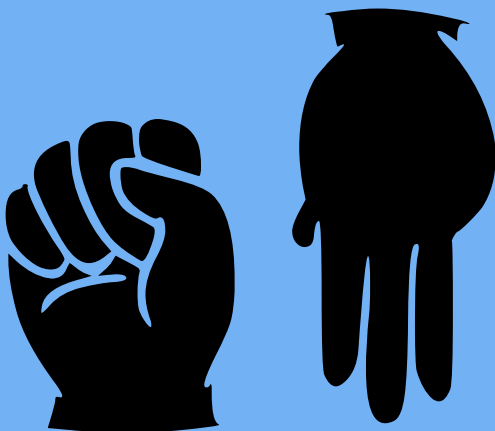


SAMÁRIO

62

62

[Xe] 4f⁶ 6s²



150,36



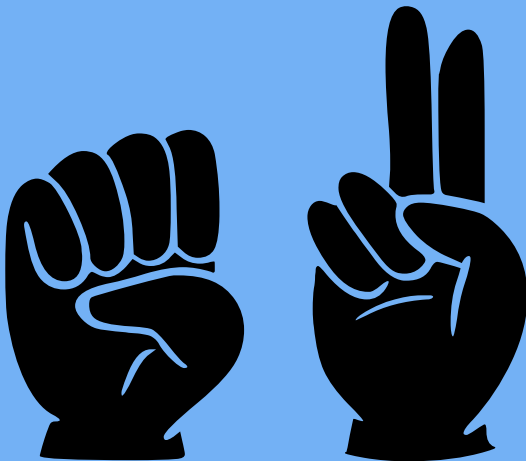


EURÓPIO

63

63

[Xe] 4f⁷ 6s²



151,964



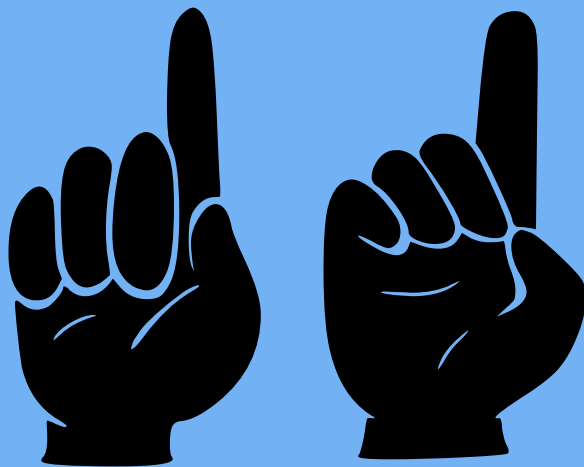


GADOLÍNIO

64

64

[Xe] 4f⁷
5d¹ 6s²



157,25

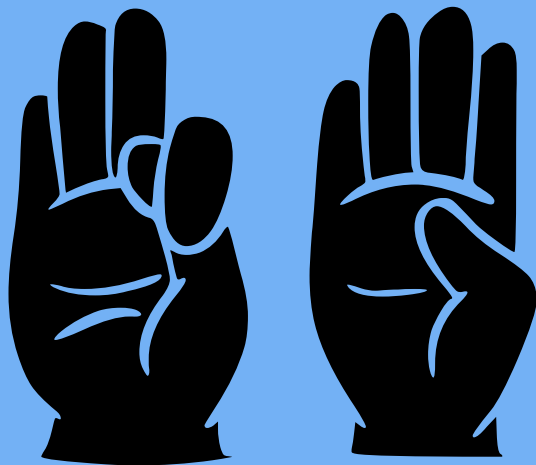




TÉRBIÓ

65

65



158,925





DISPRÓSIÓ

66

66



162,500





HÔLMIO

67

67



164,930





ÉRBIO

68

68

[Xe] 4f¹² 6s²



167,259



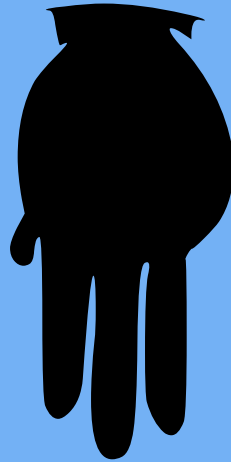


TÚLIO

69

69

[Xe] 4f¹³ 6s²



168,934



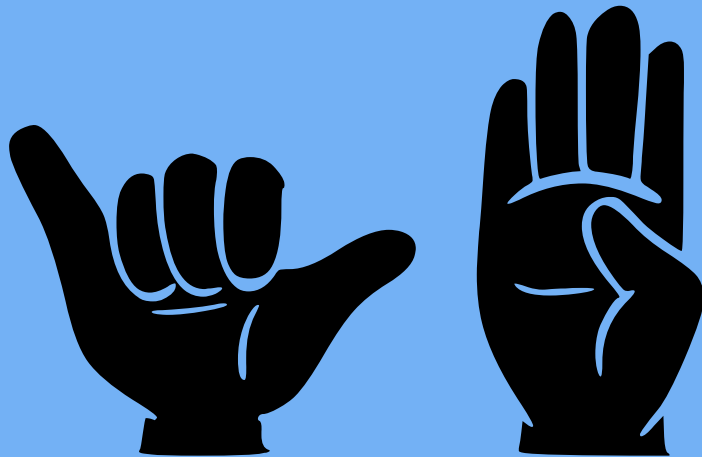


ITÉRBIO

70

70

[Xe] 4f¹⁴ 6s²



173,045

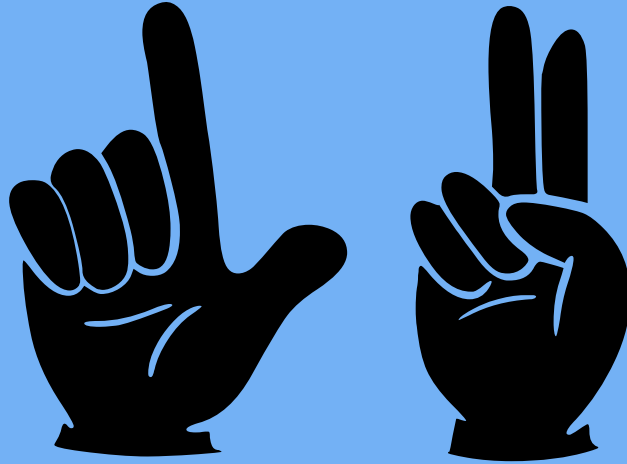
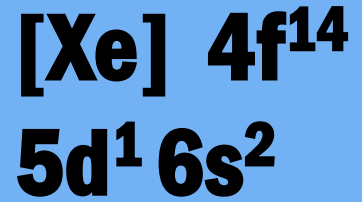




LUTÉCIO

71

71



174,967



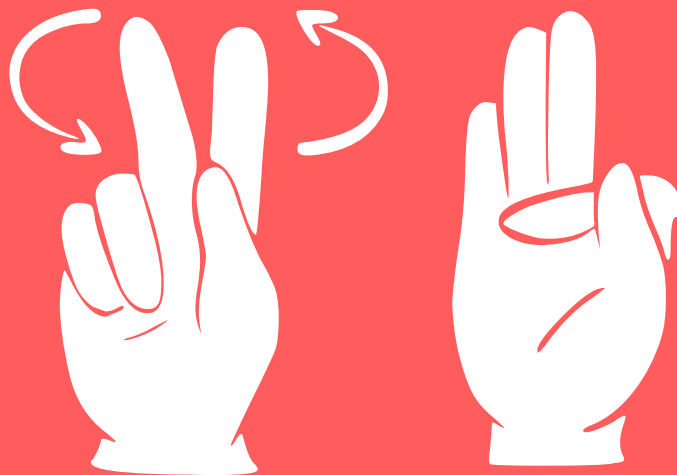


HÁFNIO

72

72

[Xe] 4f¹⁴
5d² 6s²



178,486



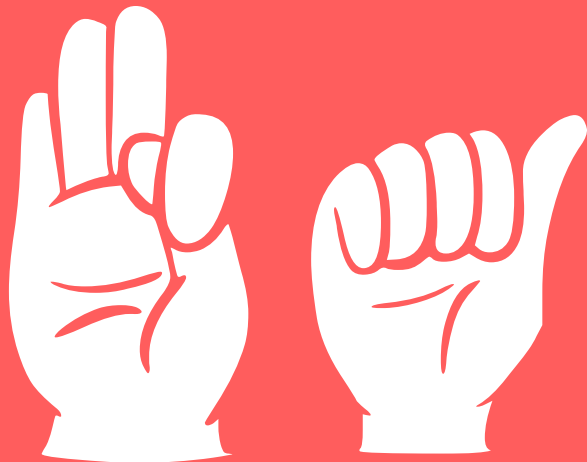


TÂNTALO

73

73

[Xe] 4f¹⁴
5d³ 6s²



180,948





TUNGSTÊNIO

74

74

[Xe] 4f¹⁴
5d⁴ 6s²



183,84



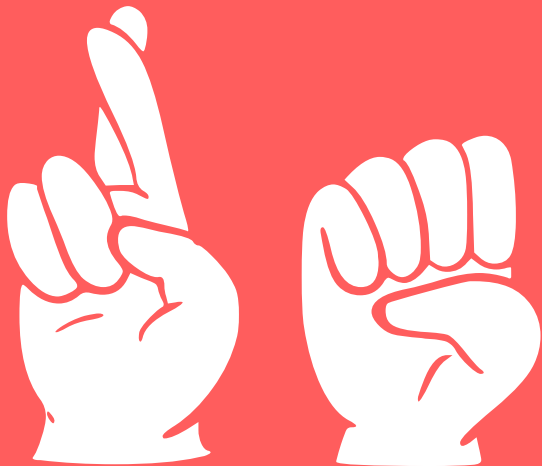


RÊNIO

75

75

[Xe] 4f¹⁴
5d⁵ 6s²



186,207





ÓSMÍO

76

76

[Xe] 4f¹⁴
5d⁶ 6s²



190,23



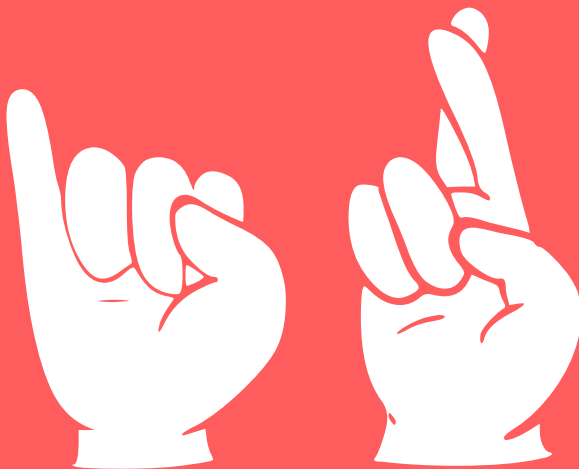


IRÍDIO

77

77

[Xe] 4f¹⁴
5d⁷ 6s²



192,217



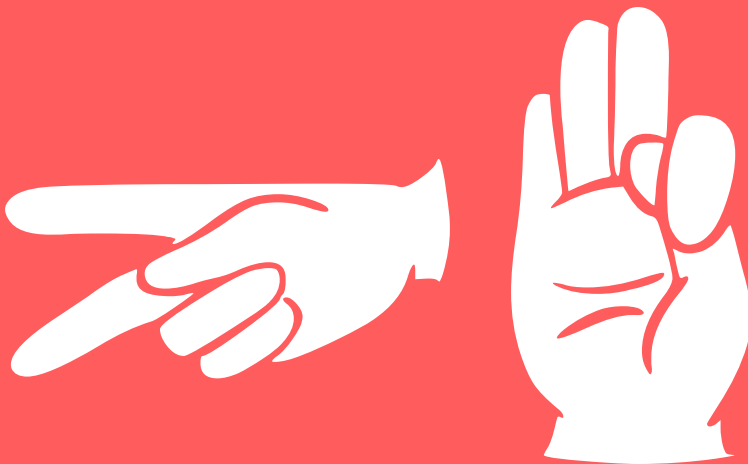


PLATINA

78

78

[Xe] 4f¹⁴
5d⁹ 6s¹



195,084



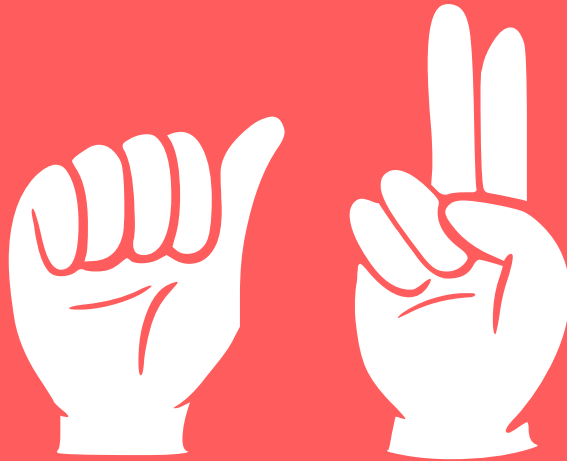


OURO

79

79

[Xe] 4f¹⁴
5d¹⁰ 6s¹



196,967

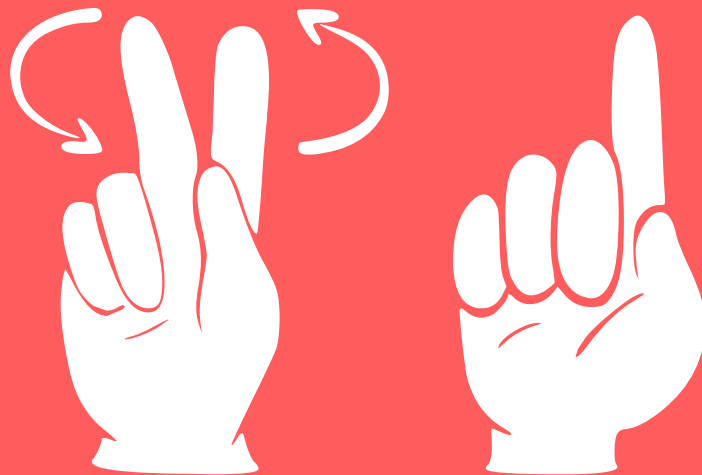




MERCÚRIO

80

80



[Xe] 4f¹⁴
5d¹⁰ 6s²



200,592





TÁLIO

81

81

[Xe] 4f¹⁴ 5d¹⁰

6s² 6p¹



204,38





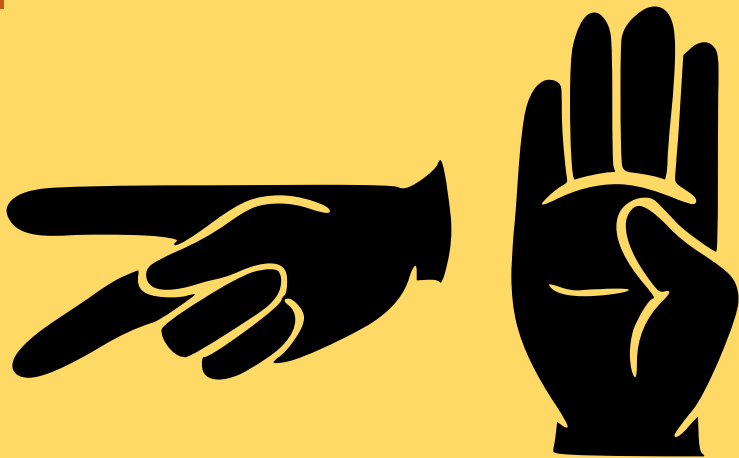
CHUMBO

82

82

[Xe] 4f¹⁴ 5d¹⁰

6s² 6p²



207,2





BISMUTO

83

83

[Xe] 4f¹⁴ 5d¹⁰

6s² 6p³



208,980

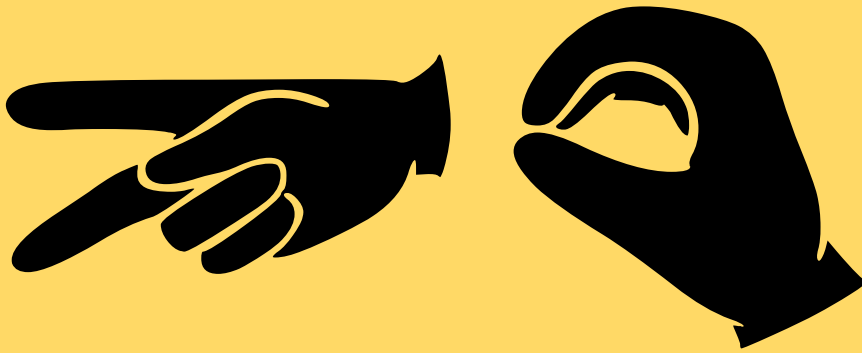
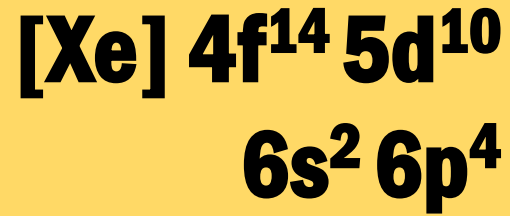




POLÔNIO

84

84



[209]





ASTATO

85

85

$[\text{Xe}] 4f^{14} 5d^{10}$

$6s^2 6p^5$



[210]





RADÔNIO

86

86

[Xe] 4f¹⁴ 5d¹⁰

6s² 6p⁶



[222]





FRÂNCIO

87

87

[Rn] 7s¹



[223]





RÁDIO

88

88

[Rn] 7s²



[226]





ACTÍNIO

89

89

[Rn] 6d¹ 7s²



[227]





TÓRIO

90

90

$[Rn] 6d^2 7s^2$



232,038



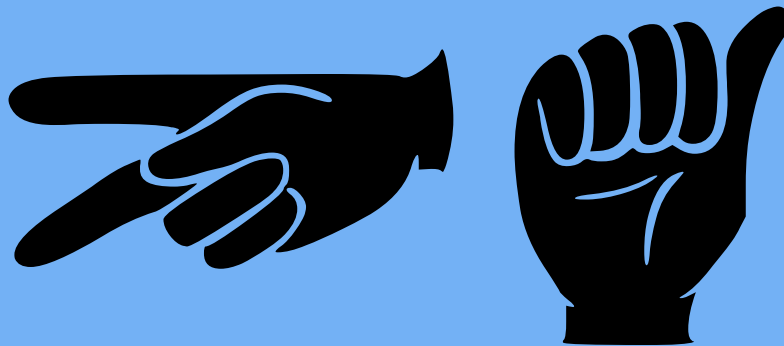


PROTACTÍNIO

91

91

[Rn] 5f²
6d¹ 7s²



231,036





URÂNIO

92

92

[Rn] 5f³
6d¹ 7s²



238,029



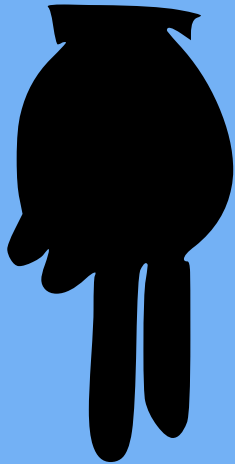


NEPTÚNIO

93

93

[Rn] 5f⁴
6d¹ 7s²



[237]



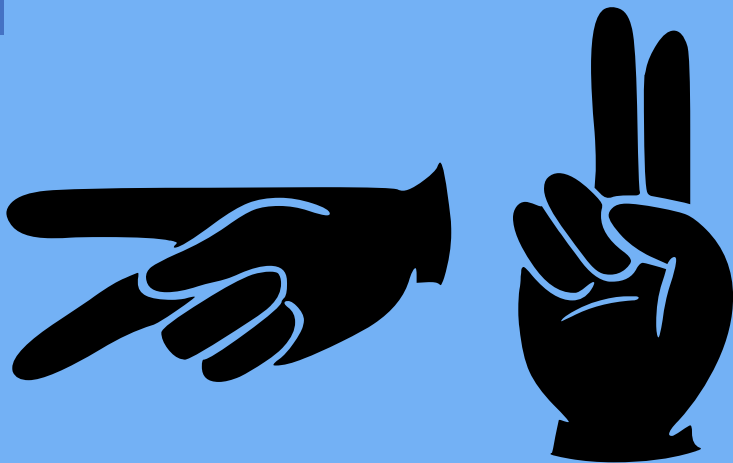


PLUTÔNIO

94

94

[Rn] 5f⁶ 7s²



[244]





AMERÍCIO

95

95

$[Rn] 5f^7 7s^2$



[243]



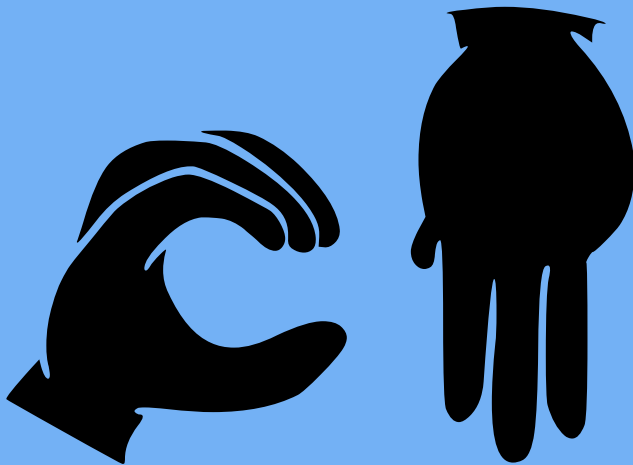


CÚRIO

96

96

$[Rn] 5f^7$
 $6d^1 7s^2$



[247]



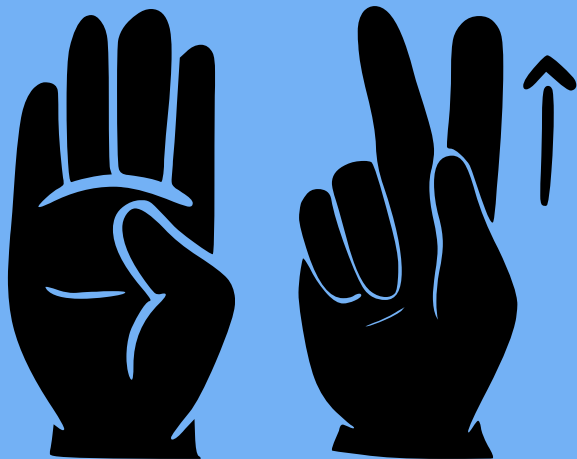


BERQUÉLIO

97

97

[Rn] 5f⁹ 7s²



[247]



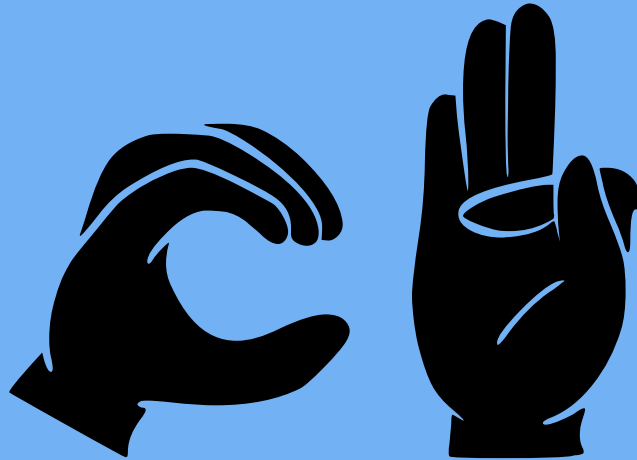


CALIFÓRNIO

98

98

[Rn] 5f¹⁰ 7s²



[251]





EINSTÊNIO

99

99

[Rn] 5f¹¹ 7s²



[252]



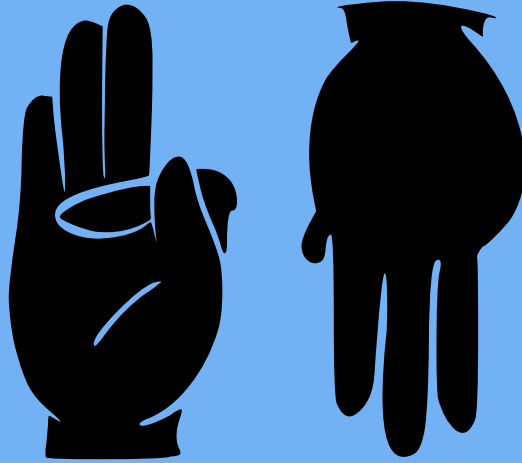


FÉRMIO

100

100

[Rn] 5f¹² 7s²



[257]



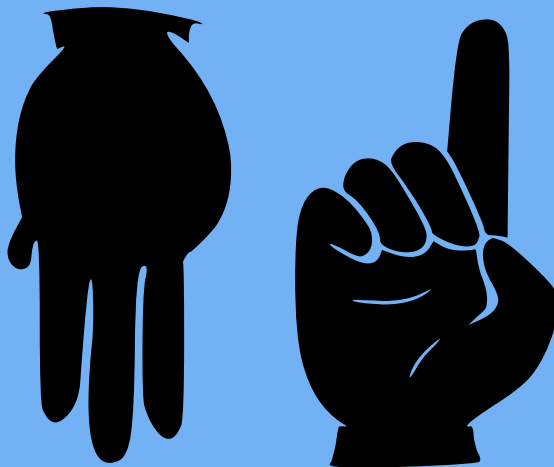


MENDELÉVIO

101

101

[Rn] 5f¹³ 7s²



[258]



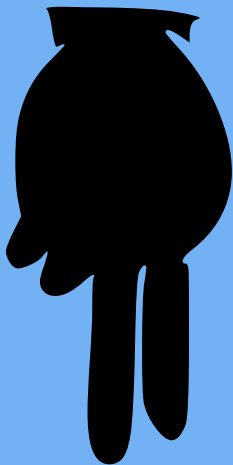


NOBÉLIO

102

102

[Rn] 5f¹⁴ 7s²



[259]



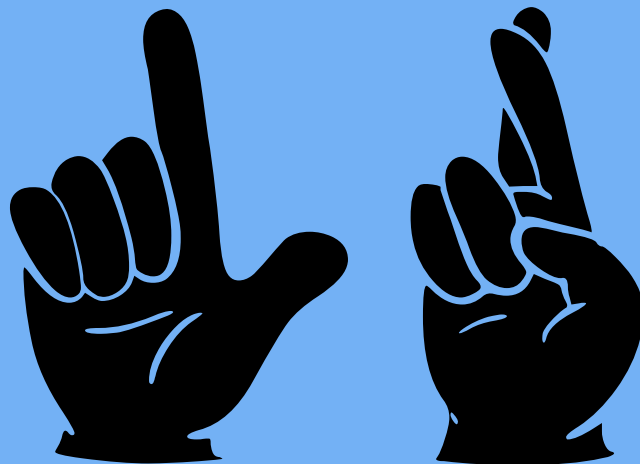


LAURÊNCIO

103

103

$[Rn] 5f^{14}$
 $7s^2 7p^1$



[262]





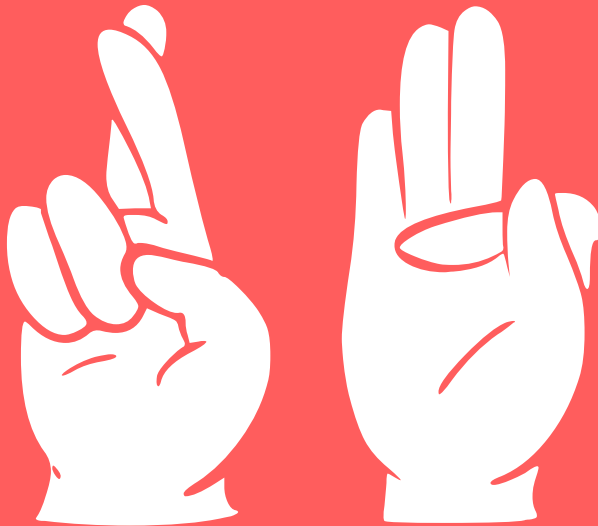
RUTHERFÓRDIO

104

104

[Rn] 5f¹⁴

6d² 7s²



[267]





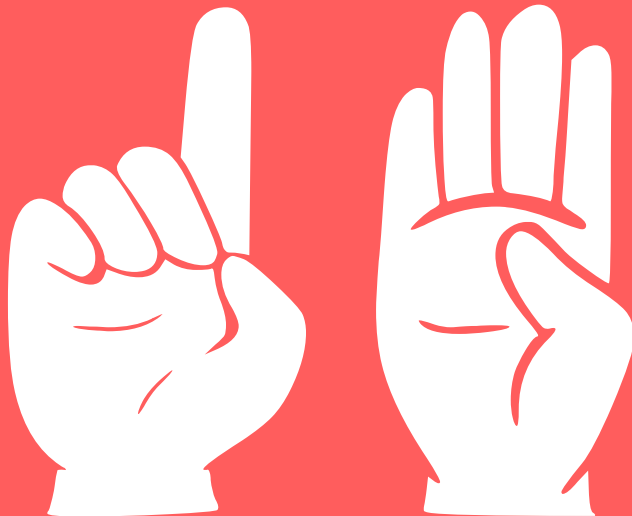
DÚBNIO

105

105

[Rn] 5f¹⁴

6d³ 7s²



[268]





SEABÓRGIO

106

106

[Rn] 5f¹⁴

6d⁴ 7s²



[269]





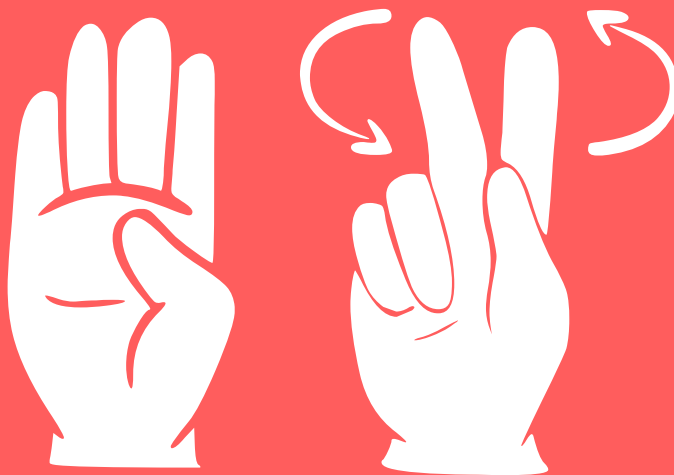
BÓHRIO

107

107

[Rn] 5f¹⁴

6d⁵ 7s²



[270]





HÁSSIO

108

108

[Rn] 5f¹⁴

6d⁶ 7s²



[269]



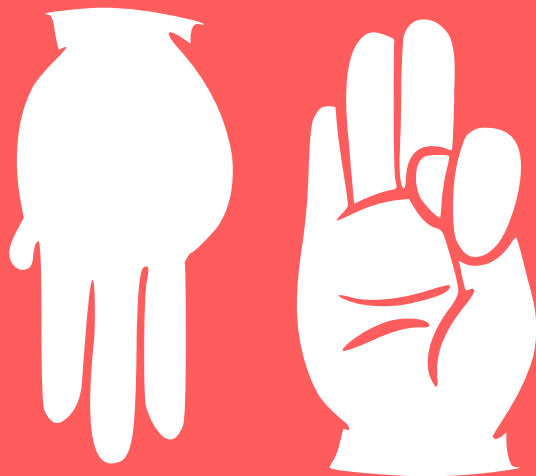


MEITNÉRIO

109

109

$[Rn] 5f^{14}$
 $6d^7 7s^2$



[278]





DARMSTÁDTIO

110

110

[Rn] 5f¹⁴

6d⁹ 7s¹



[281]

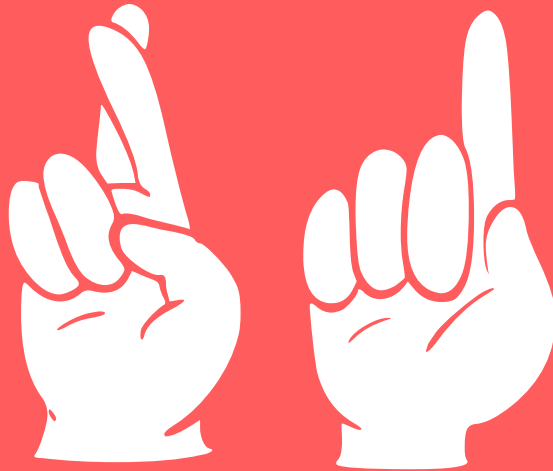




ROENTGÊNIO

111

111



[280]



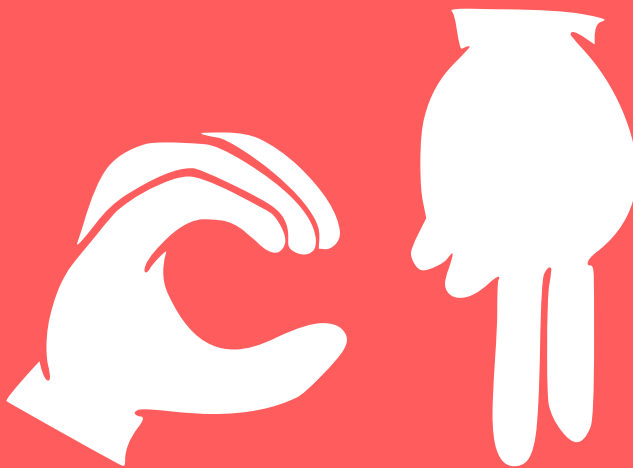


COPERNÍCIO

112

112

[Rn] $5f^{14}$
 $6d^{10} 7s^2$



[285]





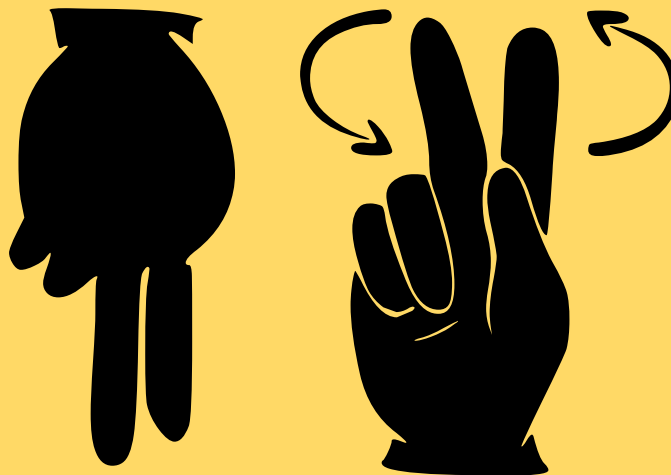
NIHÔNIO

113

113

[Rn] 5f¹⁴ 6d¹⁰

7s² 7p¹



[286]





FLERÓVIO

114

114

[Rn] 5f¹⁴ 6d¹⁰

7s² 7p²



[289]





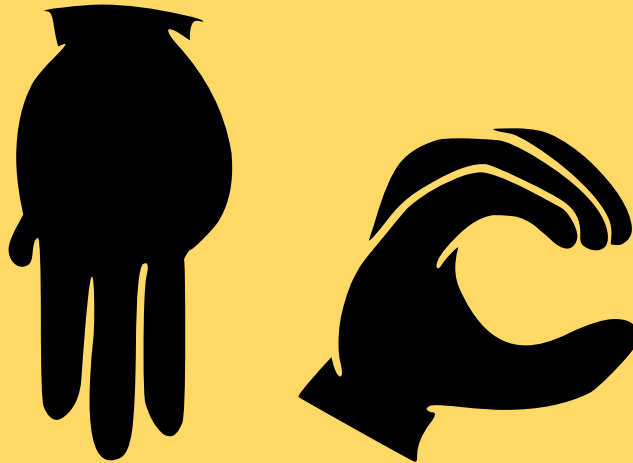
MOSCÓVIO

115

115

[Rn] 5f¹⁴ 6d¹⁰

7s² 7p³



[289]





LIVERMÓRIO

116

116

[Rn] 5f¹⁴ 6d¹⁰

7s² 7p⁴



[293]

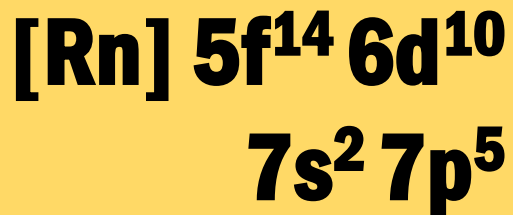




TENESSO

117

117



[294]





OGANESSÔNIO

118

118

$[Rn] 5f^{14} 6d^{10}$
 $7s^2 7p^6$



[294]



